

Lesson Number	Title of the Lesson	Skills	Activity
29B	The Design	Creative thinking Decision Making	Draw a motif and convert it into a pattern and a design
		Problem-solving Critical Thinking	

Summary

The selection of colors, patterns or designs in embroidery depends on individual preferences. Care must be taken to ensure that the design is appropriate. That means the material, age, climate, occasion, and the convenience of the wearer/user all have to be taken into consideration.

Principal Points

What is a Design

- A plan or a drawing to show the appearance of something before it is made
- It is a decorative pattern that aims at increasing the beauty of the article

Build your understanding

Types of Design

Geometrical	Simplified	Naturalized	Stylized	Abstract
Design created using geometrical shapes	The design comprises of slight curves & few details	Inspired from nature	The design has more curves & details	The design does not have any specific inspiration
			Complicated designs	

What is Important to Know

1. Difference between Motif, Pattern and Design

<u>Motif</u>	<u>Pattern</u>	<u>Design</u>

A design starts with a motif	Repetition of a motif creates a pattern	Repetition of patterns creates a design
------------------------------	-----------------------------------------	-----------------------------------------

2. Steps in Enlargement of a Design

- Select a design
- Trace it on a tracing paper
- Use carbon paper to trace the design on a graph paper
- Using the squares as a guide draw the illustration onto large squares

3. Factors to consider while selecting a Design

- Purpose
- Shape and size of the Article
- Colour and texture of the fabric
- Occasion
- Sex of the wearer
- Age of the wearer
- Comfort
- Point of Emphasis

Did you know

1. Points to be kept in mind while planning the embroidery

- Who will use - Age groups
- The purpose for its use - Bags, accessories, linen
- Where will it be used - Outdoors/indoors
- When will it be used - Everyday/Occasionally
- How will it be used - Rough handling/Delicate handling

2. Methods of transferring a Design

a. Direct Method

- Freehand drawing
- Transparent or thin fabrics like lawn, organdy, voile, georgette
- Drawn with a pencil or chalk keeping the fabric tight

b. Using Carbon Paper

- Place the fabric on a smooth, hard surface and anchor with a tape
- Place the carbon paper, carbon side down between the fabric and the design, secure with a tape
- Place the design in the correct position and tape it
- Trace the design with a pointed object using pressure
- White or yellow carbon to be used on dark fabric, blue on white or light-colored fabrics

c. Back Tracing

- Draw the designs on the tracing paper

- Use the bold pencil on the backside of the design and go all over the lines of the design
- Lines should be bold
- Tape the tracing on the fabric so that the backside of the design faces the fabric

d. Using Butter paper/perforated paper

- Trace the design on the butter paper
- With the help of a needle or pin make small holes along with the design
- Mix a small amount of powdered “Neel” in kerosene oil. Make a paste
- Dip a ball of cotton in the mixture and rub it over the perforations
- Remove the paper carefully and blow off any excess powder from the fabric

e. Using a Glass Plate and Light

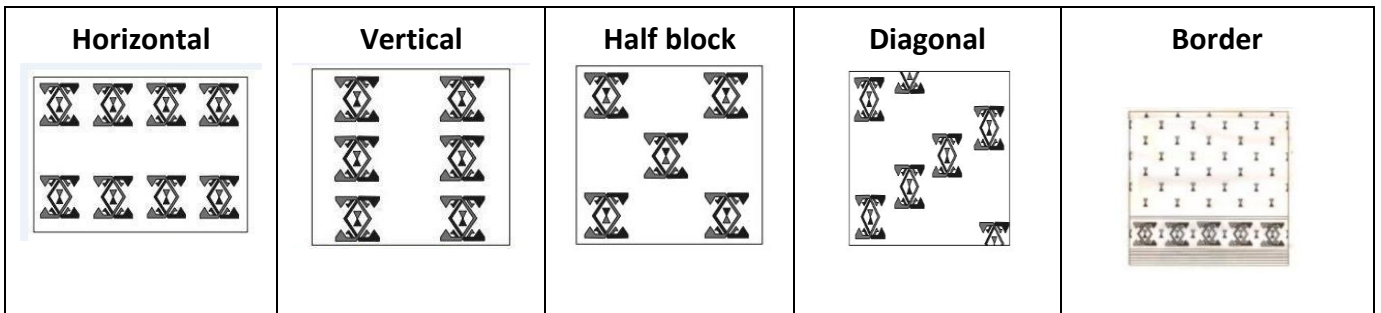
- Place a piece of the plain glass sheet and place a lighted bulb under the glass
- Transfer the design on a thin paper
- Put the paper on the glass, lay the fabric on the top of the paper and outline directly on the fabric with a hard pencil

f. Using a Template

- Draw the design on a sheet of card paper
- Cut out the pattern with a sharp blade
- Place the template at the correct position on the fabric and tape it. Draw the outline with a pencil
- Remove the tapes and templates

Extend your Horizon

Design Placement



Evaluate Yourself

- Select a design and enlarge it for a center motif on your T-shirt
- What points will you consider while selecting a design for a saree

Maximize your marks

- Attempt all the exercises given in the lesson
- List the different placements of a design, draw the diagrams also